

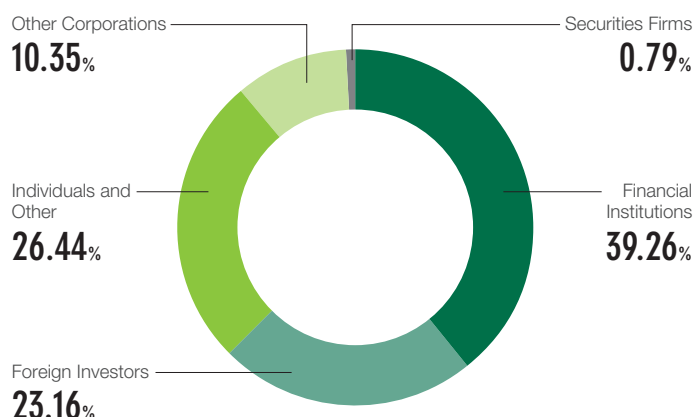
Stock Information

As of March 31, 2021

Securities Code	6118
Stock Listing	Tokyo Stock Exchange, 1st Section
Number of Shares Authorized	188,149,000
Number of Shares Issued	69,448,421
Number of Shares of Treasury Stock	9,753,258*
Number of Shares per Trading Unit	100
Number of Shareholders	6,578
Shareholder Registry Administrator	Mizuho Trust & Banking Co., Ltd.

* Number of shares of treasury stock includes 3,464,000 shares of treasury stock held by Custody Bank of Japan, Ltd. (Trust Account E) in a re-entrustment related to a J-ESOP (Japanese employee stock ownership plan) and BBT (Board Benefit Trust).

Breakdown of Issued Shares by Type of Shareholder



Major Shareholders (Top 10)*1

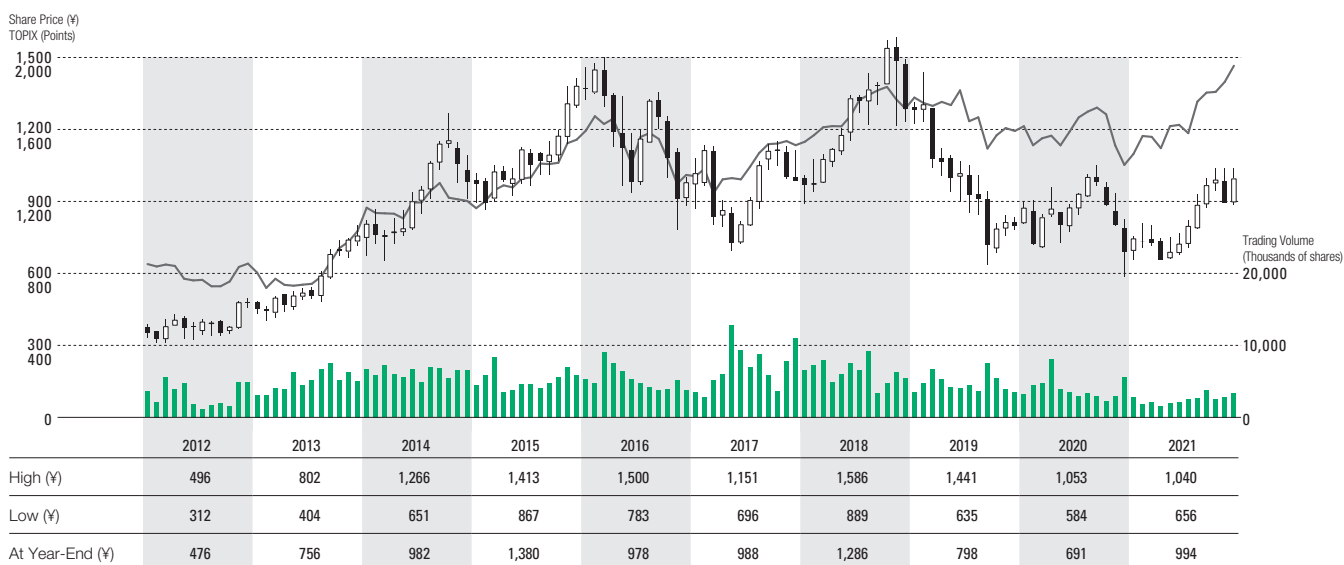
Name of Shareholders	Number of Shares Held (Thousands)	Percentage of Total Issued Shares (%)
The Master Trust Bank of Japan, Ltd. (Trust Account)	4,833	7.65
The Dai-ichi Life Insurance Company, Ltd.	4,000	6.33
Custody Bank of Japan, Ltd. (Trust Account E)*2	3,464	5.48
Nippon Life Insurance Company	2,533	4.01
Meiji Yasuda Life Insurance Company	2,516	3.98
JP MORGAN CHASE BANK 385632	2,284	3.62
Mizuho Bank, Ltd.	2,179	3.45
Custody Bank of Japan, Ltd. (Trust Account)	1,794	2.84
AIDA ENGINEERING Trading-Partner Shareholding Association	1,503	2.38
Kimikazu Aida	1,447	2.29

*1 Although the Company holds 6,289,258 shares of treasury stock, it is excluded from the major shareholders listed above.

Ownership percentages are based on 63,159,163 shares, the total number of issued and outstanding shares, less treasury stock.

*2 Shares shown as held by Custody Bank of Japan, Ltd. (Trust Account E) are being held in a re-entrustment related to a J-ESOP and BBT.

Share Price and Trading Volume



Share Price (upper left) TOPIX (lower left) Trading Volume (right)